

**Q1.**

Any High is a secondary school with over 1000 students age 11–19. It makes extensive use of ICT for teaching and learning, as well as administration.

The school wants to buy laptops for Year 7 students.

Students will sometimes need to produce short video clips.

They could use the built-in webcam to capture video.

(i) State **two** other devices they could use.

(2)

1 .....

.....

2 .....

.....

(ii) Explain why Laptop D would be best for editing video.



(2)



.....

.....

.....

.....

Laptop A		Laptop B	
			
Processor speed	1.6 GHz	Processor speed	2.1 GHz
RAM	1 GB	RAM	3 GB
Internal hard drive	160 GB	Internal hard drive	500 GB
Battery life	5 hours	Battery life	3 hours
Screen size	10.2 inch	Screen size	15.6 inch
Resolution	1024 × 600	Resolution	1366 × 768
Weight	1.3 kg	Weight	2.8 kg
Optical storage	None	Optical storage	8x DVD ROM

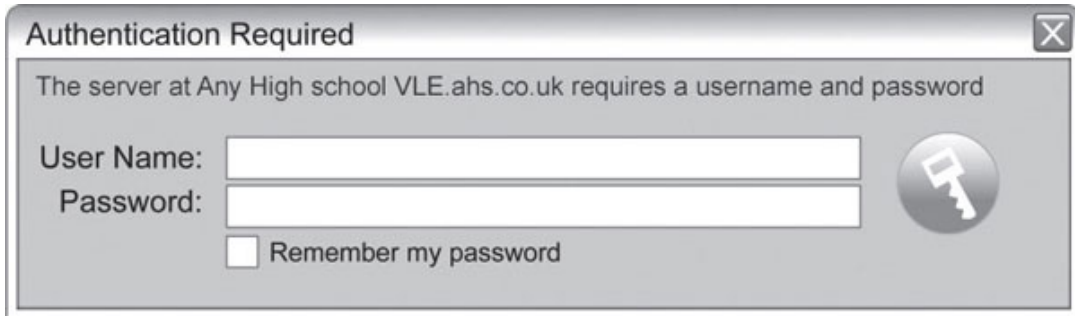
<b>Optical storage</b>	None	<b>Optical storage</b>	8× DVD-ROM
<b>Built-in webcam</b>	No	<b>Built-in webcam</b>	Yes
<b>Laptop C</b>		<b>Laptop D</b>	
			
<b>Processor speed</b>	2.13 GHz	<b>Processor speed</b>	2.53 GHz
<b>RAM</b>	4 GB	<b>RAM</b>	8 GB
<b>Internal hard drive</b>	500 GB	<b>Internal hard drive</b>	640 GB
<b>Battery life</b>	4 hours	<b>Battery life</b>	2 hours
<b>Screen size</b>	16.4 inch	<b>Screen size</b>	17 inch
<b>Resolution</b>	1600 × 900	<b>Resolution</b>	1900 × 1200
<b>Weight</b>	3.2 kg	<b>Weight</b>	5.5 kg
<b>Optical storage</b>	Blu-ray HD play back, 8× DVD-RW	<b>Optical storage</b>	8× DVD-ROM
<b>Built-in webcam</b>	Yes	<b>Built-in webcam</b>	Yes

**Q2.**

Any High is a secondary school with over 1000 students age 11–19. It makes extensive use of ICT for teaching and learning, as well as administration.

The school has a virtual learning environment (VLE).

(i) When Harry logs on to the VLE at his friend's PC he sees this dialogue box:



Give **one** reason why he should not tick the 'Remember my password' checkbox.

(1)

.....

.....

(ii) Harry uses the VLE to check his timetable at home.

Describe **two** other ways the VLE can help Harry with his school work.

(4)

1 .....

.....

.....

.....

.....

2 .....

.....

.....

.....

(iii) State **two** drawbacks of relying on the VLE.

(2)

1 .....

.....

2 .....

.....

**Q3.**

Laura and Shameela are friends. They use digital devices to listen to their favourite bands and to watch music videos.



Laura and Shameela are going to a Hi-Riderz concert at the City Arena.

Hi-Riderz perform at City Arena.



A guest singer uses the internet to perform live with the band using VoIP.

What is VoIP?

- A** A wireless microphone processor
- B** A method of sending audio data
- C** A high speed internet connection
- D** A digital audio auto-tuner effect

**Q4.**

Laura and Shameela are friends. They use digital devices to listen to their favourite bands and to watch music videos.



Laura and Shameela are going to a Hi-Riderz concert at the City Arena.

The lead singer uses a wireless microphone.

State **two** causes of poor signal quality when using wireless connections.

**(2)**

- 1 .....
- 2 .....

Q5.

Lee's dad has decided the family should join the digital age.

He has bought some new laptops.

Lee sets up a wireless network for the family.

(i) Which of these must he have?

(1)

- A Router
- B Modem
- C Dongle
- D Internet connection

(ii) Give **two** reasons for having a wireless home network.

(2)

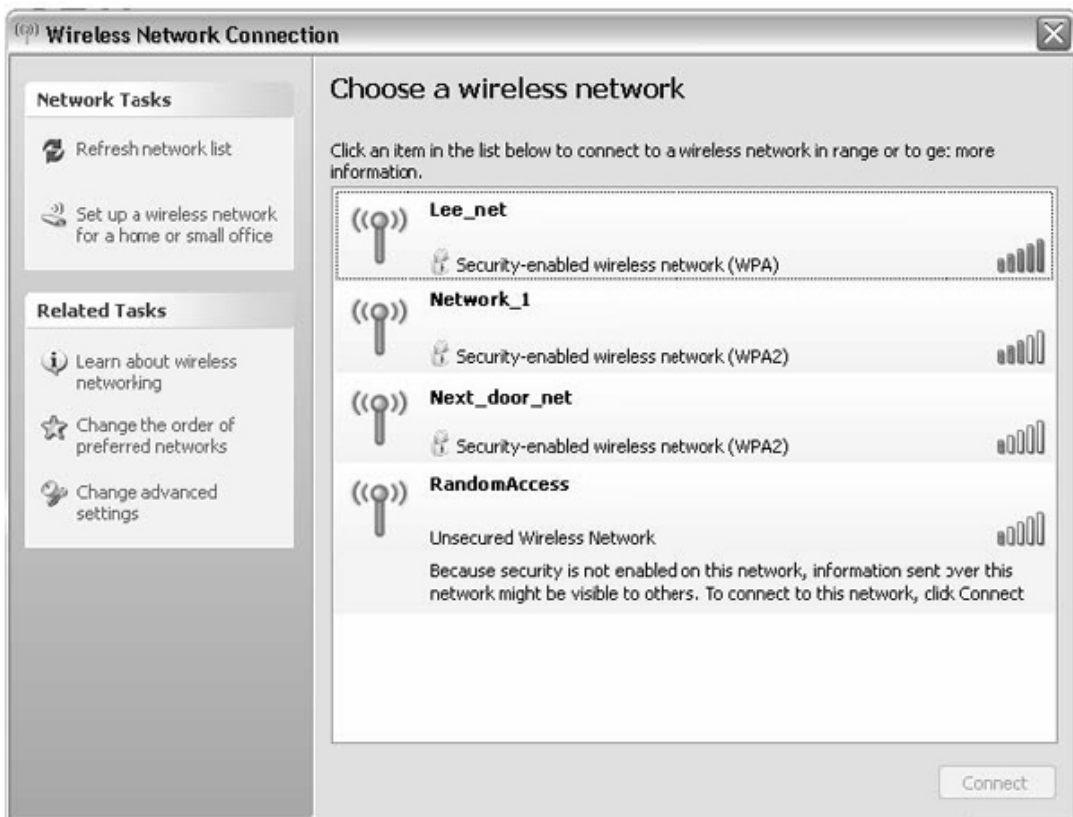
1 .....

.....

2 .....

.....

(iii) Lee sees this pop up when he tries to connect to the wireless network.





The pop up displays the names of the wireless networks.

Explain what else it tells Lee about these wireless networks.

**(3)**

.....

.....

.....

.....

.....

.....

.....

.....